



DigitalBGA Software Recommendation For Final Expense Field Underwriting



Best Plan Pro

BestPlanPro is software where you can input combinations of medical conditions and medications and have a program do all the field underwriting and quoting calculations in real time to make sure your clients are qualifying for the best plan possible.

It will automatically process age, height/weight, medications, health conditions, face value/maximum monthly budget and state restrictions.

You'll place more business (less declines + winning more business) and write less guaranteed issue which means more commission dollars in your account

BestPlanPro will make you an immediate field underwriting expert for \$30/mo.

DigitalBGA agents receive a [50% discount through this link](#).

Regular price is \$60/mo. With the discount through this link it's only \$30/mo and you can cancel at any time. You get a 7-day free trial as well.

Learn more about Best Plan Pro by watching the demo video here:

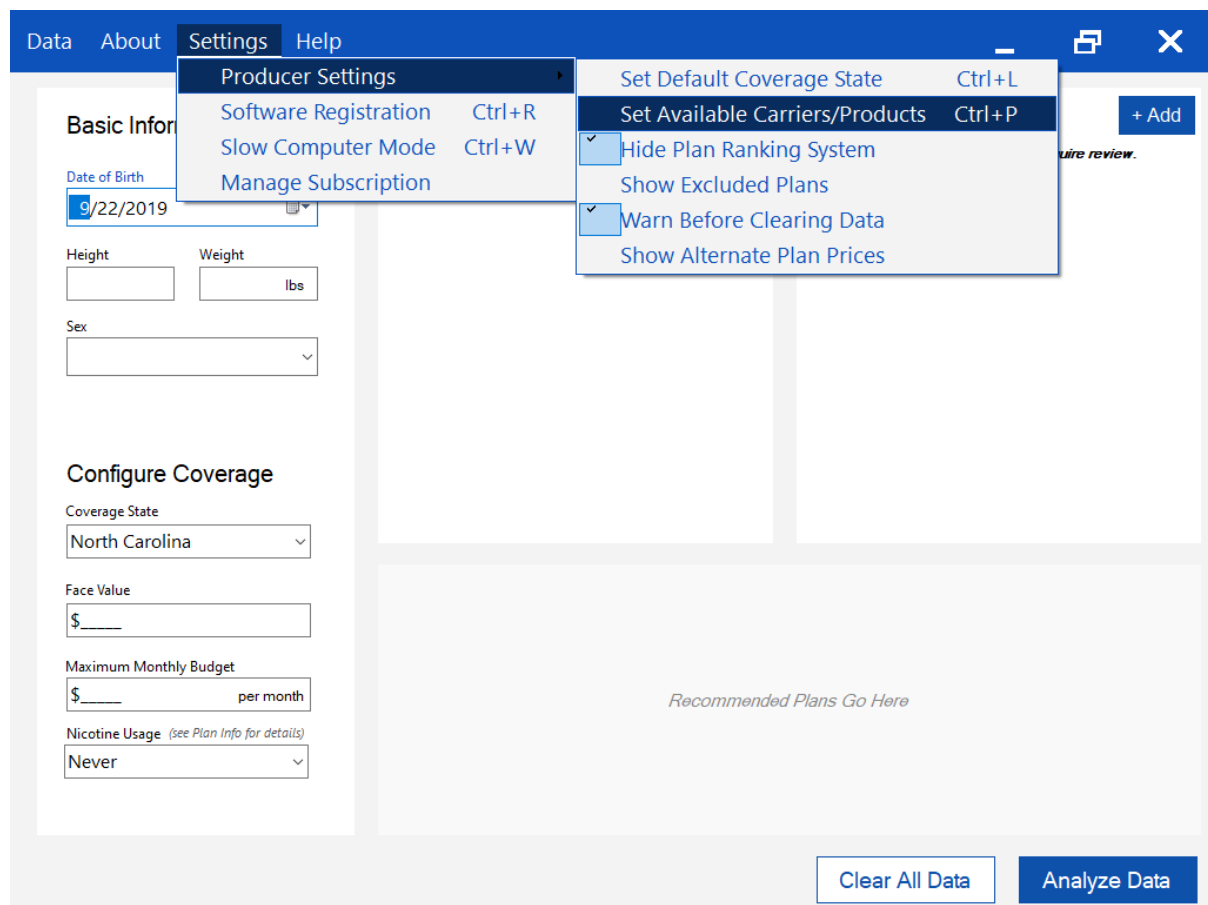
[BestPlanPro.com](https://www.bestplanpro.com)

BestPlanPro Setup Instructions (after purchase)

1) Watch all the tutorial video here (very important to grasp the full use of the software): BestPlanPro.com/tutorials

PRO TIP: Try and use the online version only as the desktop will require updates (online version automatically updates) and since all DigitalBGA technology is web-based, this will just be another tab open on your computer.

2) When you first enter the software, limit the carriers to what you can offer over the phone as many FE products can't be sold over the phone. To do this: Click “Settings” > “Producer settings” > “Set available carriers/Products” See Screenshot.



Then place a “check “ mark beside all the carriers you are contracted with thru DSB/DigitalBGA. Listed below:

- **Aetna**
- **AIG GIWL**
- **Gerber Life**
- **Great Western**
- **Liberty Bankers**
- **Mutual of Omaha**
- **Prosperity**
- **Royal Neighbors**
- **Sentinel Security**

The screenshot displays the BestPlanPro software interface. The main window has a dark blue header with navigation tabs: Data, About, Settings, and Help. The interface is divided into several sections: Basic Information, Medications, and Conditions/Events. The Medications section is currently active, showing a list of available carriers/products/plans. A modal window titled 'Available Carriers/Products/Plans' is open, displaying a list of carriers with checkboxes. The 'Final Expense' section is selected, and the following carriers are listed:

- American Amicable Golden Solution
- American Amicable Senior's Choice
- Americo Eagle Premier
- Assurant Whole Life
- Columbian Life Dignified Choice
- Family Benefit Life Golden Eagle
- Foresters Plan Right
- Gerber Life
- Great Western Guaranteed Assurance
- Innovative Solutions Whole Life
- KSKJ Final Expense
- Liberty Bankers SIMPL
- Life Shield Survivor
- Mutual of Omaha Living Promise
- Occidental Life Golden Solution

At the bottom of the modal window, there is a 'Save Products' button. The main window also features a 'Go Here' link and buttons for 'Clear All Data' and 'Analyze Data'.

If you have questions with the software, contact BestPlanPro support:

Phone: 1-800-472-1559

Submit a ticket: <https://bestplanpro.com/help/>

Happy Selling!

*** DigitalBGA has no affiliation with BestPlanPro. We simply recommend them as a 3rd party software to final expense agents.